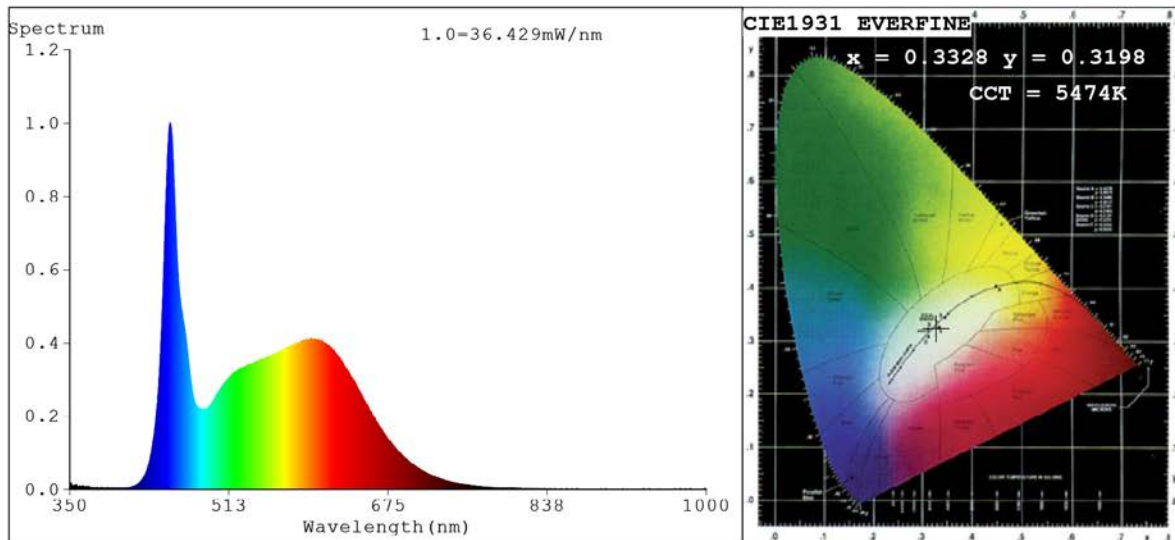


Spectrum Test Report



Color Parameters:

Chromaticity Coordinate: $x=0.3328$ $y=0.3198$ $u'=0.2157$ $v'=0.4663$
 $CCT=5474K$ ($Duv=-0.0115$) Dominant WL: $L_d = -556.3nm$ Purity=4.3%
 Ratio: R=17.7% G=76.5% B=5.9%; Peak WL: $L_p=452.3nm$ FWHM=19.1nm
 Render Index: $R_a=92.4$ CRI=89.8 TM30: $R_f=85$ $R_g=102$ $L_{av}=552.4nm$
 R1 =94 R2 =95 R3 =95 R4 =94 R5 =94 R6 =89 R7 =91
 R8 =87 R9 =70 R10=92 R11=94 R12=70 R13=95 R14=97 R15=98

Photo Parameters:

Flux = 946.7 lm Eff. : 78.85 lm/W $F_e = 3.317 W$

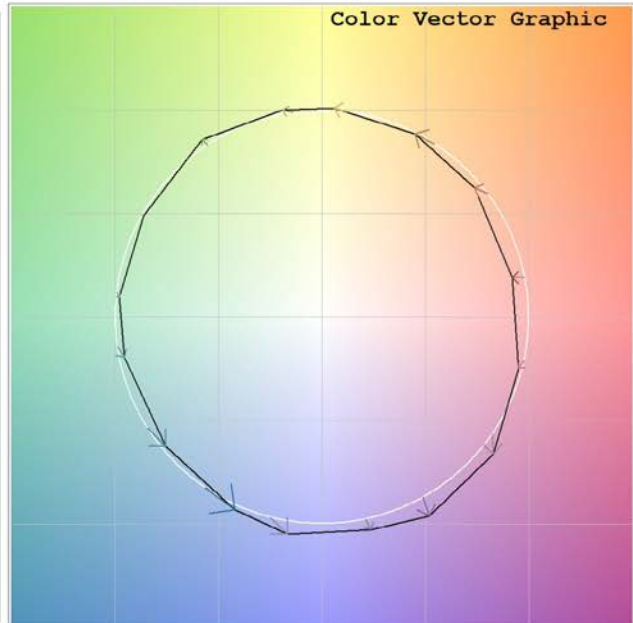
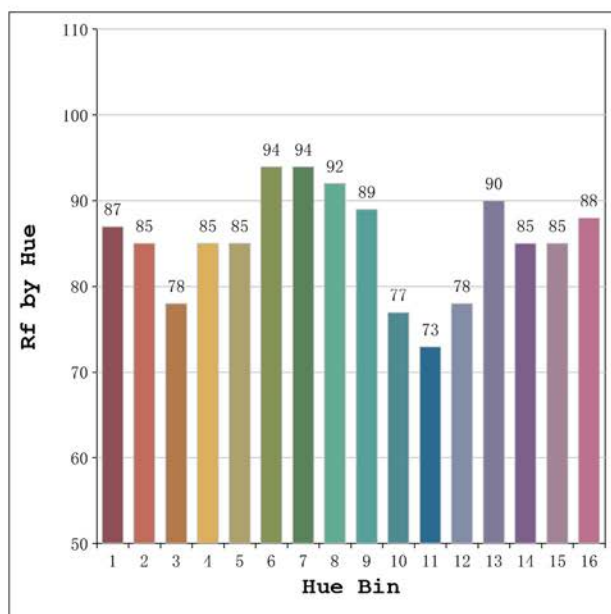
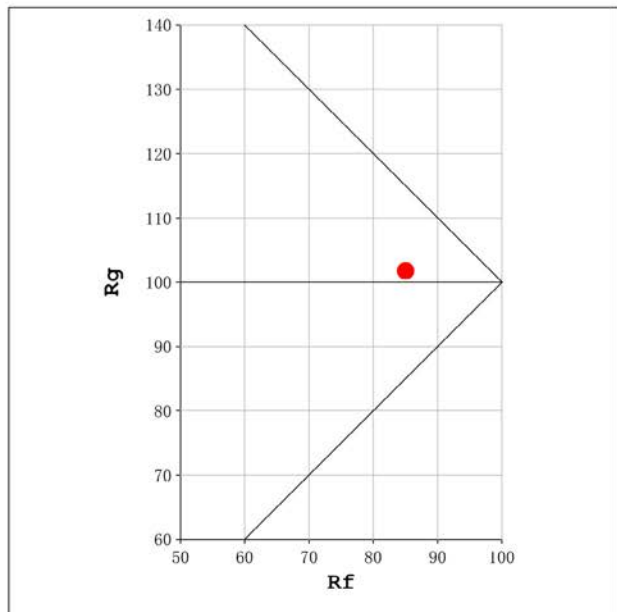
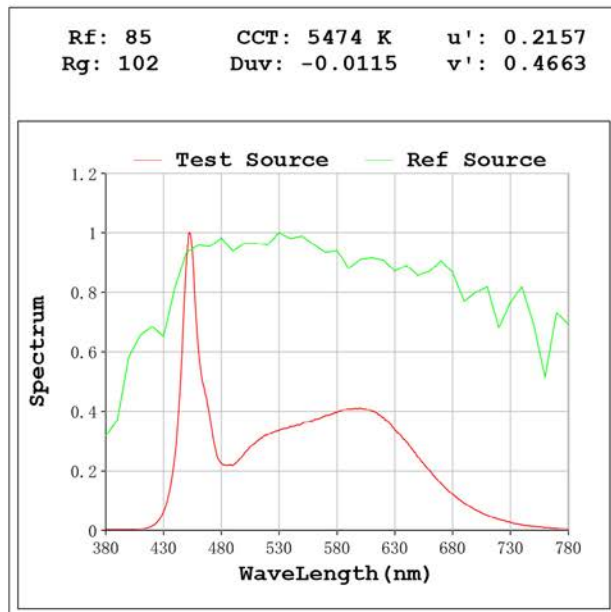
Electrical parameters:

$V = 23.998 V$ $I = 0.5003 A$ $P = 12.01 W$ PF = 1.000

Status: Integral T = 732 ms $I_p = 33165 (51\%)$

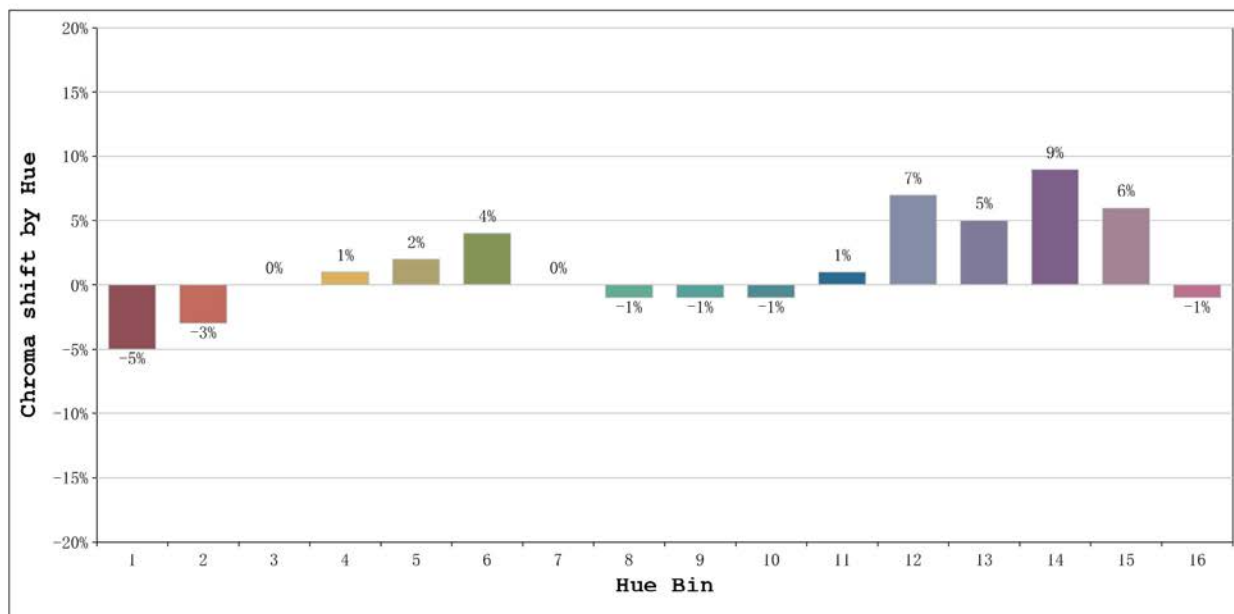
Model: Ecoled Neón 3D 5500K
 Tester: Sergio Carneros
 Temperature: 27Deg
 Manufacturer: Luz Negra S.L.

Number: 10.286
 Date: 2024-11-21 09:52:15
 Humidity: 35%
 Remarks: 100cm de Neón



Model:Ecoled Neón 3D 5500K
 Tester:Sergio Carneros
 Temperature:27Deg
 Manufacturer:Luz Negra S.L.

Number: 10.286
 Date:2024-11-21 09:52:15
 Humidity:35%
 Remarks:100cm de Neón



			Graphic shift(%)	
Hue Bin	Hue Angle	Rf	Chroma	Hue
1	0.0° - 22.5°	87	-5	1
2	22.5° - 45.0°	85	-3	6
3	45.0° - 67.5°	78	0	10
4	67.5° - 90.0°	85	1	7
5	90.0° - 112.5°	85	2	5
6	112.5° - 135.0°	94	4	1
7	135.0° - 157.5°	94	0	0
8	157.5° - 180.0°	92	-1	2
9	180.0° - 202.5°	89	-1	6
10	202.5° - 225.0°	77	-1	12
11	225.0° - 247.5°	73	1	18
12	247.5° - 270.0°	78	7	10
13	270.0° - 292.5°	90	5	2
14	292.5° - 315.0°	85	9	-2
15	315.0° - 337.5°	85	6	-6
16	337.5° - 360.0°	88	-1	-4

Model:Ecoled Neón 3D 5500K
Tester:Sergio Carneros
Temperature:27Deg
Manufacturer:Luz Negra S.L.

Number: 10.286
Date:2024-11-21 09:52:15
Humidity:35%
Remarks:100cm de Neón